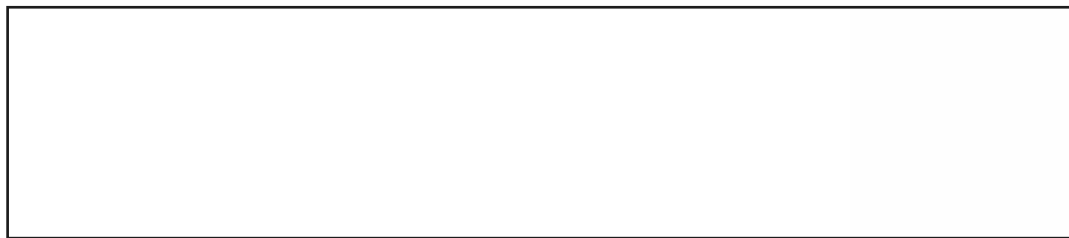


Place knowledge: I can understand geographical similarities and differences through the study of human and physical geography of a region of the United Kingdom and a region within Asia.



Photos courtesy of Moyan Brenn (@flickr.com) - granted under creative commons licence - attribution

England and Japan: Places of Interest

Famous English Landmark: Stonehenge



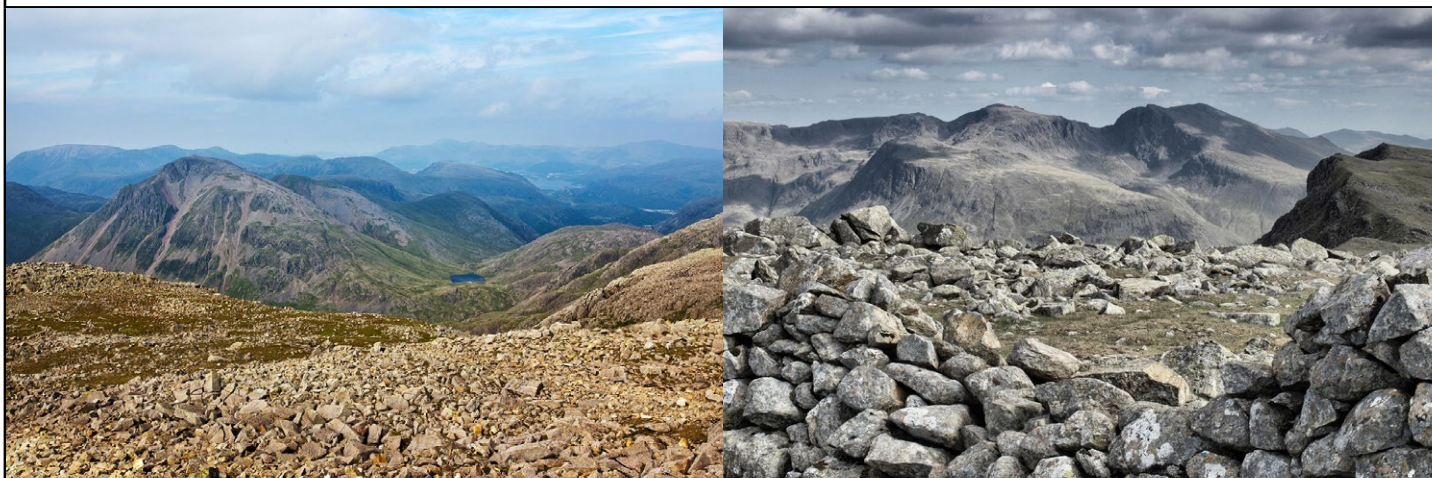
- Stonehenge stands majestic near Salisbury in the county of Wiltshire and began its long history in 3000BC and probably started as a burial ground. No one is really sure why Stonehenge was built but some historians believe that it may have been a site for burials, healing, ceremonies, or as a temple to the Sun.
- In around 2500BC, the familiar stone circle was created. The larger stones around the outside are called the Sarsen Stones, the largest of which weighs about 35 tonnes!
- The smaller stones in the centre came from Wales and are called the bluestones.

Famous Japanese Landmark:

-
-
-

England and Japan: Places of Interest

The Highest Point in England: Scafell Pike



- It is the highest mountain in England, standing at 978m (3,209 ft.) above sea level, in the Lake District in Cumbria.
- Scafell Pike is an igneous rock formation, which was formed more than 450 million years ago.
- It takes about 2-3 hours to walk the quickest way to the summit via the Wasdale Head route, where you can then appreciate the spectacular 360 degree views.

Highest Point in Japan:

-
-
-

England and Japan: Places of Interest

Famous English Building: Windsor Castle



- Windsor Castle is the world's oldest and largest inhabited castle and has been the family home of many British kings and queens for nearly 1,000 years (including today by Her Majesty, Queen Elizabeth II).
- William the Conqueror started building Windsor Castle in 1070 and took 16 years to finish.
- On 20th November 1992, The Great Fire at Windsor took 15 hours and 1.5million gallons of water to put out. This was part of Queen Elizabeth II's 'Annus Horribilis'.

Famous Japanese Building:

-
-
-

England and Japan: People of Interest

Famous English Leader: Sir Winston Churchill



- Sir Winston Churchill was British Prime Minister twice and saw Britain through the Second World War.
- His wartime speeches are famous. Here's a extract from one of them: "We shall defend our Island, whatever the cost may be; we shall fight on the beaches, we shall fight on the landing grounds, we shall fight in the fields and in the streets, we shall fight in the hills; we shall never surrender..."
- He was born in 1874 and died in 1965 and was an MP for over 60 years! He is such a famous political figure that there is a statue of him in the House of Commons and new MPs rub his foot before making their first speech.

Famous Japanese Leader:

-
-
-

England and Japan: People of Interest

Patron Saint of England: Saint George



- St. George is the Patron Saint of England and his Saint's Day is 23rd April each year.
- Other countries also have St. George as their Patron Saint including: Aragon, Catalonia, Ethiopia, Georgia, Greece, Lithuania, Palestine, Portugal, and Russia, as well as the cities of Amersfoort, Beirut, Bteghrine, Cáceres, Ferrara, Freiburg, Genoa, Ljubljana, Gozo, Pomorie, Qormi, Lod and Moscow.
- St. George has a mythical tale attached to him where he slayed a dragon to save a princess from being eaten by it. But legend has it that really he was a Roman soldier from Turkey around 280AD to 303AD.

Photos courtesy of Hunky Punk and Darling Starlings Flying the Nest (@flickr.com) - granted under creative commons licence - attribution

Patron Saint of Japan:

-
-
-

England and Japan: People of Interest

Famous English Singer Songwriter: Ed Sheeran



- Ed Sheeran was born on 17th February 1991 in Halifax, England.
- He has written hundreds of popular pop songs, some of which he sings, some of which were written for other artists.
- He has sold more than 150 million records worldwide which means he is one of the most successful music artists of all times.
- In 2017, he was awarded with an MBE (Most Excellent Order of the British Empire) from the Queen for his services to music and charity.

"Ed Sheeran Portrait Session" by Kamil_Took is licensed under CC BY 3.0

"ed-sheeran-en-argentina-2017" by Ludmila Joaquina Valentina is licensed under CC BY 3.0

Famous Japanese Sportsperson:

-
-
-

England and Japan: People of Interest

Famous English Member of Royalty: Duchess of Cambridge – Kate Middleton



- Kate Middleton was born on 9th January 1982 in Reading, England. Her birth name was Catherine Elizabeth Middleton.
- She met her now husband, Prince William, in 2001 at the University of St Andrews where she studied art history. She and William married on 29th April 2011 at Westminster Abbey and they now have three children; Prince George, Princess Charlotte and Prince Louis of Cambridge.
- The Duchess of Cambridge spends a large amount of her time supporting and working with many charities including 'Heads Together' which raises awareness about mental health.

"Duke-of-cambridge-family" by photo.liputan6 is licensed under CC BY 3.0

"Catarina, Princesa Guilherme de Cambridge7" by Tesscharlotte is licensed under CC BY 3.0

Famous Japanese Actress:

-
-
-

England and Japan:

<hr/>	

<hr/>
<ul style="list-style-type: none">•••